



THE LOWRY HOTEL

MANCHESTER

Manchester's Iconic Hotel

MEETINGS AND EVENTS

The Lowry Hotel

Iconic. Intuitive. Individual.



Nestled on the banks of the River Irwell, The Lowry Hotel is a landmark of modern luxury and sophisticated style in the heart of Manchester. Our iconic five-star hotel offers guests an exceptional blend of contemporary comfort and timeless elegance.

From our spacious, beautifully designed rooms to our award-winning RE:TREAT and River Restaurant, The Lowry Hotel provides an unparalleled experience. We promise to make your stay both memorable and unique.

We understand the demands of organising large groups and the importance of a smooth, stress-free stay. The Lowry Hotel offers ample space, personalised services, and swift check-in/check-out processes, making us the ideal choice for conferences and groups, whether you're hosting an exhibition, an extravagant event or a meeting in style. With 165 spacious rooms and suites, including connecting options, we ensure the comfort of your entire group while providing VIP services for high-profile guests. A few highlights include:

- Prime location in Manchester, with easy access to transport links.
- Dedicated event planning and guest services for a seamless experience.
- Customisable meeting rooms, private dining spaces, and catering options.
- Flexible room configurations, ideal for meetings and entertainment.
- VIP services for corporate executives and high-profile guests.

EXCLUSIVE BENEFITS

When you book with The Lowry Hotel, you unlock a range of exclusive benefits designed to enhance your event.

- Dedicated Events Co-Ordinator
- Private Entrance with Branding Opportunities
- Competitive Day Delegate Rates
- Reduced Group Room Rates
- Complete Exclusivity on Bedroom Floors (*available upon request*)
- Concessions Bank Available
- Secure Car Parking
- Coach Parking (*for up to 6 coaches*)
- Coach Charging - **3 Phase 415 Volts** (*chargeable*)
- Upgrades (*subject to availability*)

OUR MEETING ROOMS



The Lowry Hotel's sophisticated meeting rooms offer a versatile setting for corporate events, conveniently located on a single floor for seamless accessibility. Each room is equipped with modern technology, including high-speed Wi-Fi, screens, projectors, and audio-visual equipment to support effective presentations and virtual meetings. The Lowry Hotel offers spaces to accommodate a variety of group sizes, from intimate boardrooms to larger conference rooms, all featuring flexible seating arrangements that can be tailored to specific needs. Floor-to-ceiling windows flood the rooms with natural light, creating an inviting and productive atmosphere.

Dedicated event co-ordinators ensure a smooth experience, with catering options available to suit any event style, from light refreshments to fine dining. This combination of top-tier amenities, adaptable spaces, and professional support makes The Lowry Hotel a prime choice for meetings and events in Manchester, all within an upscale, easily navigable layout designed to enhance the flow of your event.

MEETING ROOM CAPACITIES

MEETING ROOM 1

16 BOARDROOM 30 RECEPTION
12 CABARET 26 THEATRE
14 CLASSROOM 15 U-SHAPE
20 DINNER

MEETING ROOM 2

16 BOARDROOM 30 RECEPTION
12 CABARET 26 THEATRE
14 CLASSROOM 15 U-SHAPE
20 DINNER

MEETING ROOM 3

16 BOARDROOM 30 RECEPTION
12 CABARET 26 THEATRE
14 CLASSROOM 15 U-SHAPE
20 DINNER

MEETING ROOM 4

16 BOARDROOM 30 RECEPTION
12 CABARET 26 THEATRE
14 CLASSROOM 15 U-SHAPE
20 DINNER

MEETING ROOM 5

12 BOARDROOM

MEETING ROOM 6

16 BOARDROOM 30 RECEPTION
12 CABARET 26 THEATRE
14 CLASSROOM 15 U-SHAPE

MEETING ROOM 7

16 BOARDROOM 35 RECEPTION
14 CABARET 26 THEATRE
14 CLASSROOM 18 U-SHAPE

MEETING ROOM 8

16 BOARDROOM 35 RECEPTION
14 CABARET 26 THEATRE
14 CLASSROOM 18 U-SHAPE

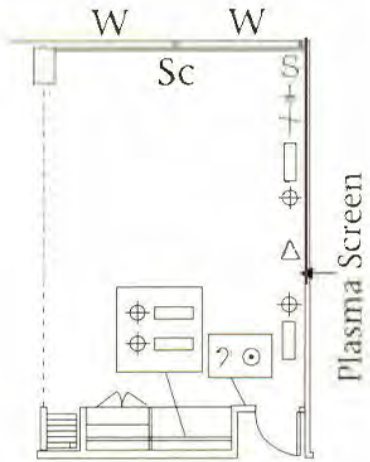
MEETING ROOM 2,3&4

36 BOARDROOM 70 RECEPTION
40 CABARET 90 THEATRE
42 CLASSROOM 35 U-SHAPE
50 DINNER

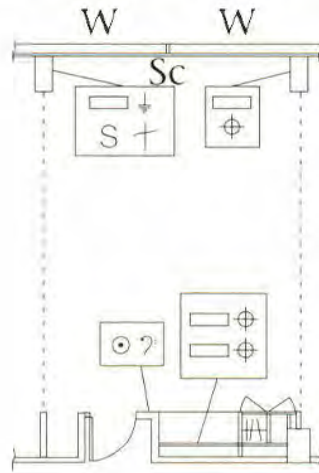
MEETING ROOM 7&8

36 BOARDROOM
40 CABARET 70 RECEPTION
39 CLASSROOM 80 THEATRE
40 DINNER 35 U-SHAPE

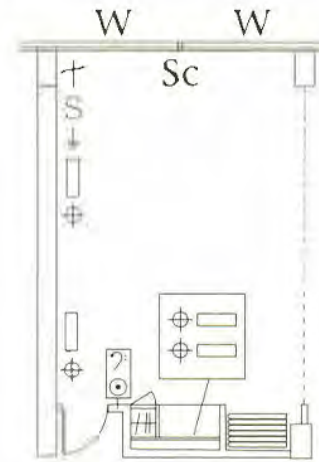
CITY VIEW



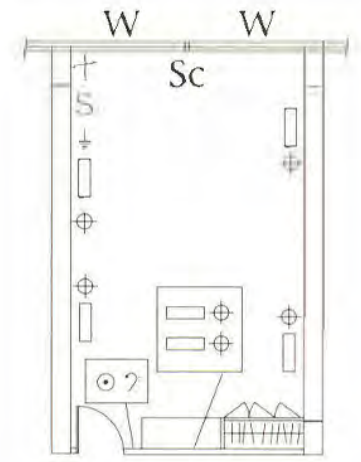
MEETING ROOM 4



MEETING ROOM 3



MEETING ROOM 2



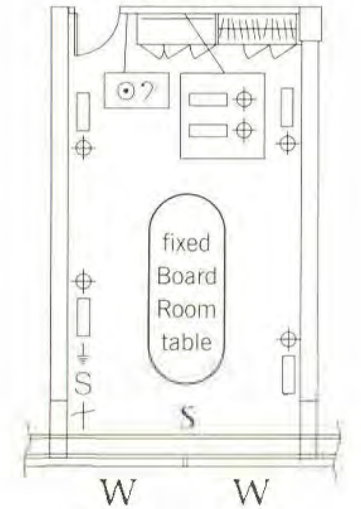
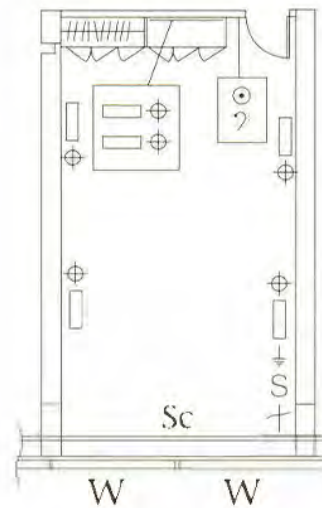
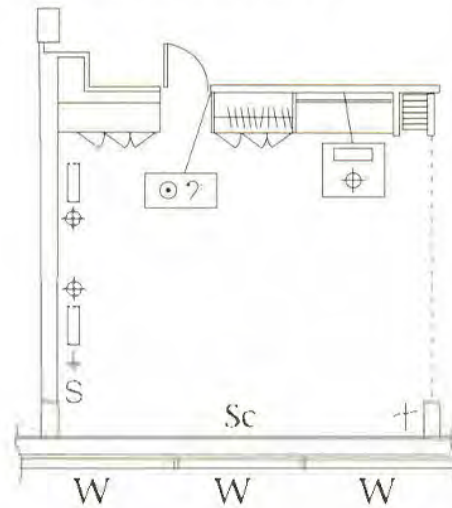
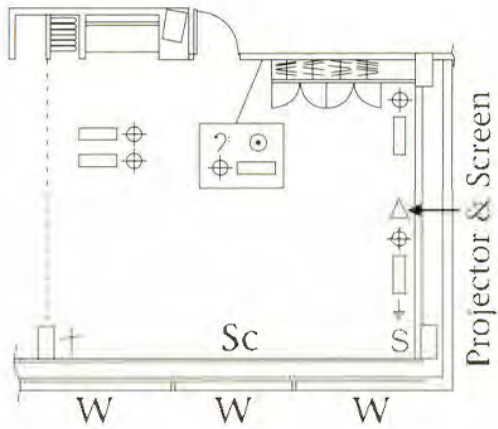
MEETING ROOM 1

MEETING ROOM 8

MEETING ROOM 7

MEETING ROOM 6

MEETING ROOM 5



RIVER VIEW

BALLROOMS



BALLROOM ONE

This is a spacious and airy room with floor to ceiling windows on one side offering spectacular views of the River Irwell and the Calatrava Bridge, has a pull down screen and a ceiling mounted projector. The room also has electronic blackout blinds and its own Pre Function area just outside the room.

DIMENSIONS: W9m | L20m | H3.8m | Area 180m²

BALLROOM TWO

Ballroom two is a spacious and airy room with floor to ceiling windows on one side with electronic blackout blinds, it also has a pull down screen and a ceiling mounted projector inbuilt. It benefits from a function area just outside the room.

DIMENSIONS: W9m | L20m | H3.8m | Area 180m²

CAPACITIES

BALLROOM ONE

- 40 BOARDROOM
- 80 CABARET
- 100 CLASSROOM
- 100 CLASSROOM (BACK PROJECTION)
- 150 DINNER
- 90 DINNER DANCE
- 200 RECEPTION
- 175 THEATRE
- 175 THEATRE (BACK PROJECTION)
- 30 U-SHAPE

BALLROOM TWO

- 40 BOARDROOM
- 70 CABARET
- 90 CLASSROOM
- 75 CLASSROOM (BACK PROJECTION)
- 130 DINNER
- 70 DINNER DANCE
- 150 RECEPTION
- 125 THEATRE
- 100 THEATRE (BACK PROJECTION)
- 30 U-SHAPE

FEATURES

AIR CONDITIONING | DIMMER | LIGHTING - FLUORESCENT | VIDEO CONFERENCING
BACK PROJECTION | EXHIBITION SPACE | NATURAL DAYLIGHT | WHITE BOARD | BAR
FREE WI-FI | BLACKOUT | BUILT-IN PA SYSTEM | LCD PROJECTOR | STAGING
CLOAKROOM | THREE PHASE POWER



THE GRAND BALLROOM



The Grand Ballroom has views of the city and the River Irwell. It benefits from floor to ceiling windows on two sides which allows natural light to brighten up any event.

When hosting an event in the Ballroom we can offer exhibition stand space in our pre-function rooms for displays. We can offer 6ft/182cm space for 16 stands in pre function one and 8 spaces in pre function two.

CAPACITY

225 CABARET

200 CLASSROOM

300 DINNER

600 RECEPTION

400 THEATRE

DIMENSIONS: W18m | L20m | Ceiling Height: 3.8m | Area 360m²

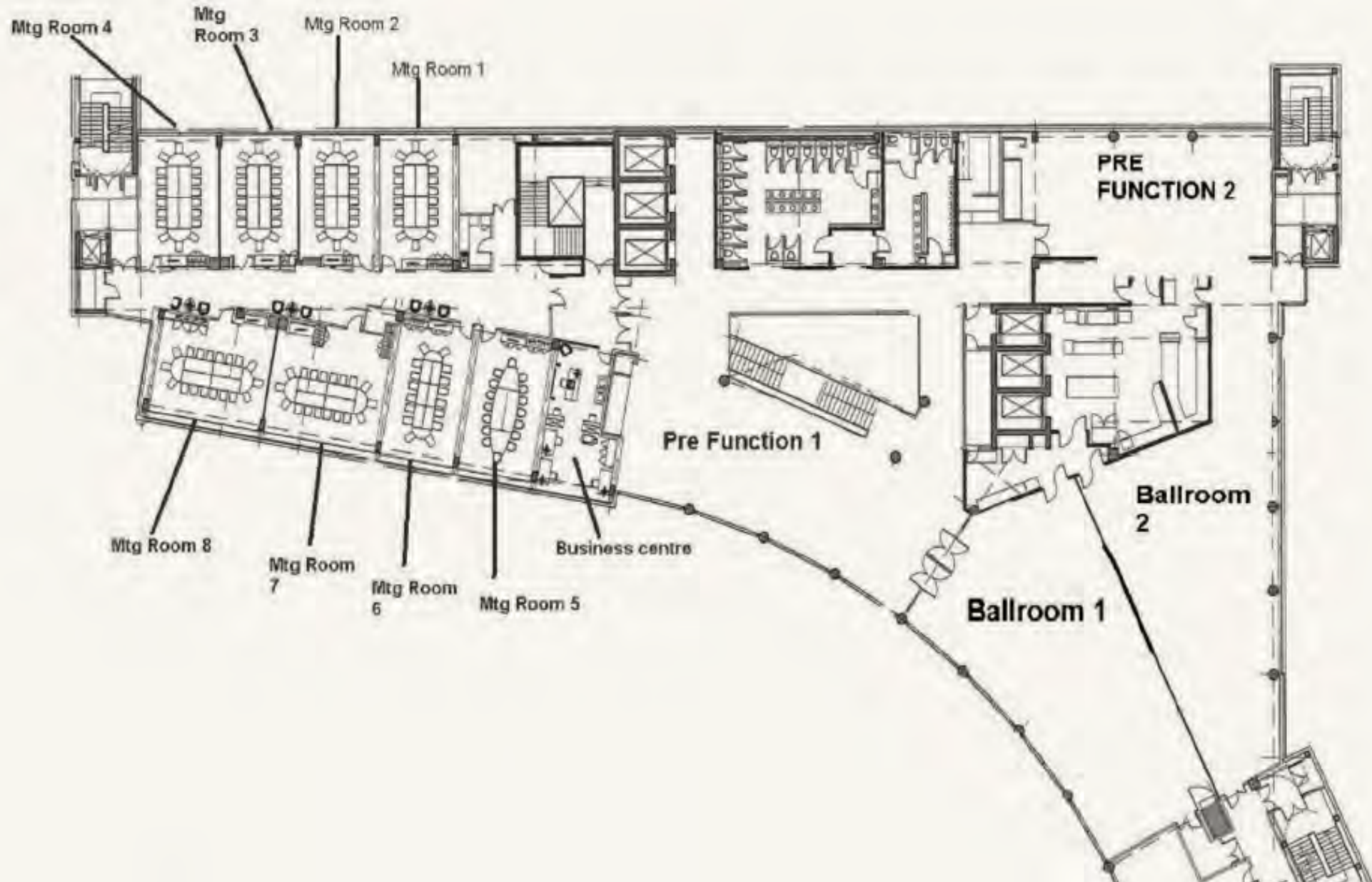
FEATURES

AIR CONDITIONING | DIMMER | LIGHTING - FLUORESCENT | VIDEO CONFERENCING
BACK PROJECTION | EXHIBITION SPACE | NATURAL DAYLIGHT | WHITE BOARD | BAR
FREE WI-FI | BLACKOUT | BUILT-IN PA SYSTEM | LCD PROJECTOR | STAGING
CLOAKROOM | THREE PHASE POWER



MEETINGS & EVENTS FLOORPLAN

Our versatile meeting and event spaces are conveniently located on a single floor, ensuring seamless access for you and your guests. This thoughtful layout enhances the flow between rooms, making it easy to transition smoothly from one space to another.





PRIVATE DINING ROOM

Versatile private dining at its best, whether it's a business gathering or a celebration, our private dining room with space for up to 22 guests provides dedicated service and sumptuous dining where you can set the atmosphere and pace you want. You will also have access to a private terrace area.



When booking the Private Dining Room, you will have exclusive use of our lounge for pre or post event drinks.



OUR ROOMS AND SUITES

Deluxe King Room (Standard Room)



No. of Rooms: 58 | Size: 35m²

- Walk-in Shower
- Super King-Size Bed
- Floor to Ceiling Windows
- Smart TV
- Kettle with Coffee & Tea
- City View

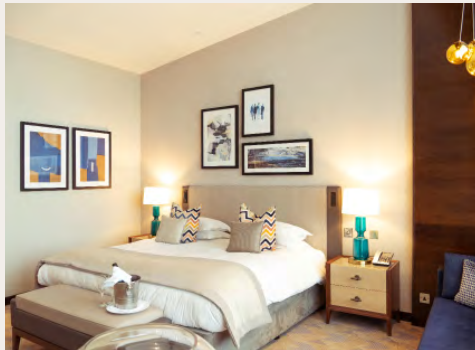
Superior King Room



No. of Rooms: 36 | Size: 35m²

- Walk-in Shower
- Super King-Size Bed
- Floor to Ceiling Windows
- Smart TV
- Kettle with Coffee & Tea
- River View

Executive King Room



No. of Rooms: 59 | Size: 35m²

- Walk-in Shower
- Super King-Size Bed
- Floor to Ceiling Windows
- Smart TV
- Coffee Machine
- 5th & 6th Floor Rooms
- Upgraded Toiletries (Karl Lagerfeld)

Junior Suite



No. of Rooms: | Size: 70m²

- Size: 70m²
- Walk-in Shower
- Super King-Size Bed
- Dressing Table
- Lounge Area
- Corner Suite
- Coffee Machine

Riverside Suite



No. of Rooms: 6 | Size: 70m²

- Size: 70m²
- Kitchenette
- Walk-in Dressing Room
- Separate Bath and Walk-in Shower
- Two Smart TVs (Lounge & Bedroom)
- Dressing Table
- Dining Table
- Second Bedroom Available

Presidential Suite



No. of Rooms: 1 | Size: 145m²

- Size: 145m²
- Double Steam Shower
- Free Standing Bath
- Separate Lounge & Dining Room
- Walk-in Dressing Room
- Fully Equipped Kitchen
- Second Bedroom Available

RIVER

RESTAURANT



At the River Restaurant, we have reimagined our cuisine under the guidance of Executive Head Chef Peter Buckely, taking diners on an experience of true five-star cuisine. We invite you and your guests to try a taste of luxury...

Together with your vision, allow us to help create and deliver an extraordinary experience in the River Restaurant. Enjoy exclusive use of the area for your event period and exceed your guests expectations.

THE PERFECT VENUE FOR YOUR PRIVATE EVENT

PRIVATE EVENTS / TAKEOVERS

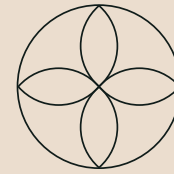
MINIMUM SPEND: £2000

MAX NUMBERS: 80

Lunch and Dinner are available upon request.

3 COURSES FROM £35 PER PERSON

Treat your guests to our Chef's Choice Menu, featuring exceptional dishes, hand-picked by our Executive Head Chef to provide the ultimate dining experience.



RE:TREAT

RE:TREAT IS OPEN 9AM - 7PM DAILY

Whether you're looking to unwind with a soothing spa treatment, revitalise with a tailored facial, or recharge with a calming yoga session in our tranquil studio, RE:TREAT offers the ultimate escape. Featuring four treatment rooms, a dedicated mani-pedi area, high-tech facilities and relaxation zones, we provide a range of holistic treatments using premium skincare products.



CORPORATE WELLNESS

At RE:TREAT, we believe that a balanced and rejuvenated workforce is the cornerstone of a thriving organisation. We have designed a range of employee wellness packages, created to empower your team's physical, mental and emotional well-being.

GIFTING & STAFF
APPRECIATION

CORPORATE WELLNESS
RE:TREAT'S

STUDIO SESSIONS

FULL RE:TREAT HIRE

CITY VENUES

Driving distance from The Lowry Hotel

1. AO Arena - 5 min.
2. Manchester Central - 10 min.
3. Albert Hall - 9 min.
4. Aviva Studios - 8 min.
5. Bridgewater Hall - 10 min.
6. Palace Theatre - 10 min.
7. O2 Ritz - 11 min.
8. Opera House - 5 min.
9. Victoria Warehouse - 10 min.
10. LCC Cricket Ground - 13 min.
11. Old Trafford - 15 min.
12. O2 Apollo - 10 min.
13. MCR Academy - 12 min.
14. CO-OP Live - 15 min.
15. Etihad Stadium - 15 min.
- Lowry Theatre - 13 min.





CONTACT DETAILS

VICTORIA SEDDON

Director of Sales

0774 1654591

victoria.seddon@thelowryhotel.com

RACHAEL MCKECHNIE

Sales Manager

07769243988

rachael.mckechnie@thelowryhotel.com

STACEY WHINCUP

Event Sales Manager

0161 827 4000

stacey.whincup@thelowryhotel.com



ICONIC
INTUITIVE
INDIVIDUAL
THE LOWRY HOTEL